



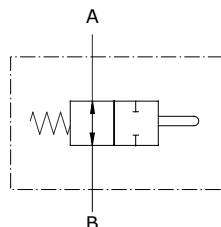
Type FC..A End stroke valves

- Normally open

Technical specifications and diagrams are measured with mineral oil of 46 cSt viscosity at 40°C (104°F) temperature.

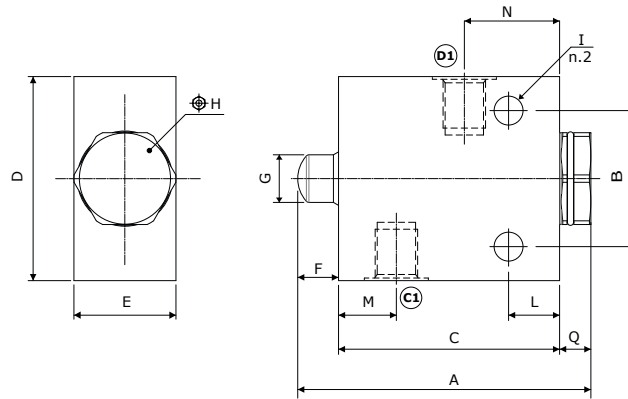
| | FC02A | FC03A |
|--|--|------------------------|
| Max. flow | 30 l/min (7.9 US gpm) | 60 l/min (15.9 US gpm) |
| Max. pressure | 300 bar (4350 psi) | |
| Fluid | mineral based oil | |
| Max. stroke | 7 mm (0.27 in) | 7 mm (0.27 in) |
| Spring force | 100 N (22.48 lbf) | |
| Viscosity | from 10 to 200 cSt | |
| Max. level of contamination | 18/16/13 ISO4406 | |
| Fluid temperature | with NBR seals from -30°C (-22°F) to 100°C (212°F) | |
| Environmental temperature for working conditions | from -40°C (-40°F) to 100°C (212°F) | |
| Weight | steel 0.75 kg (1.65 lb) | 0.77 kg (1.70 lb) |

NOTE - For different conditions, please contact Walvoil Sales Dpt.



Dimensions

FC02A - FC03A



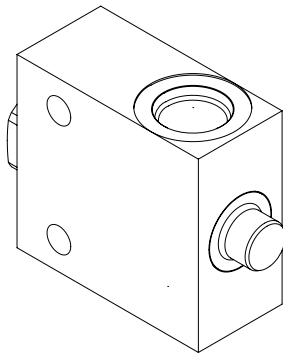
| Valve type | (A) | (B) |
|--------------|------|-----|
| FC02A | G3/8 | |
| FC03A | G1/2 | |

Dimensions are in mm-in

| Valve type | A | B | C | D | E | F | G | ⊕H | I | L | M | N | Q |
|--------------|--------------|------------|------------|------------|------------|------------|------------|----|-------------|------------|------------|-----------|-------------|
| FC02A | 86,2 3.39 | 40 1.57 | 65 2.56 | 60 2.36 | 30 1.18 | 12 0.47 | 14 0.55 | 27 | 8.5 0.33 | 15 0.59 | 17 0.67 | 28 1.1 | 9,2 0.36 |
| FC03A | 86,2 3.39 | 40 1.57 | 65 2.56 | 60 2.36 | 30 1.18 | 12 0.47 | 14 0.55 | 27 | 8.5 0.33 | 15 0.59 | 17 0.67 | 28 1.1 | 9,2 0.36 |

Ordering codes and description composition

FC ^{Port size} 03 A



FC..A Complete valves

| TYPE | CODE | DESCRIPTION |
|--------------|------------|------------------------|
| FC02A | 1419822101 | Steel body, G3/8 ports |
| FC03A | 1419832100 | Steel body, G1/2 ports |

For SAE thread, please contact our Sales Dpt.